

M12x1.75 THREAD x 1.00 DEEP
C'BORE DIA .494 x .240 DEEP

1.260" BETWEEN DRIVE KEYS

Ø1.81

ER11 MINI COLLET NUT

M13 x 0.75 THREAD

Ø1.25

Ø1.11

Ø.324

Ø.66

7/24 TAPER

1.91

0

.08

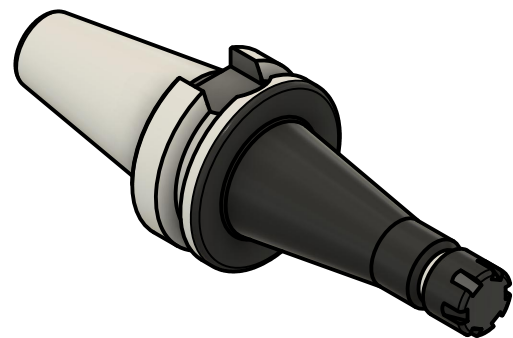
.87

2.46

2.9

3.07

90mm



NOTES:
WORKS ON ALL BT30 MACHINES
TAKES ALL ER11 COLLETS FROM .0194"-.315"
USES WRENCH PART #ER11-WRENCH (NOT INCLUDED)
FOR MORE PRODUCT DETAILS PLEASE GO TO MARITOO.COM
AND SEARCH ITEM # LISTED ON THIS PRINT

MARITOOOL

www.maritool.com

ITEM# **BT30 ER11-90MT**

Made In USA / Drawn By FM